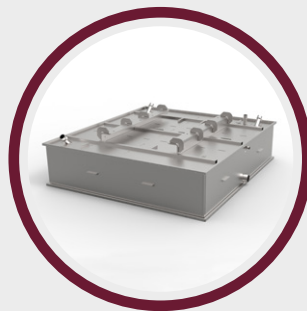


### CABINS:

- Standard modules.
- Universal modules.
- Locomotive modules.
- Double toilet cabins.



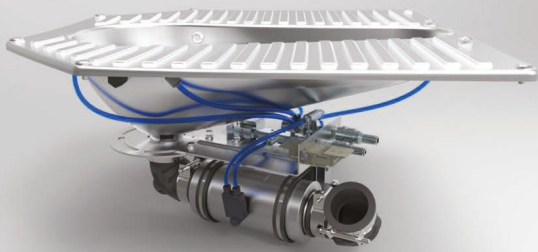
### TANKS:

- Waste Water Tanks.  
(HDPE or Stainless Steel).
- Underframe Waste Water Tanks.
- Fresh Water tanks.  
(HDPE or Stainless Steel).



### TOILET SYSTEMS:

- Vacuum Toilet system  
(Compact and Plug & Play).
- GWRS integrated.



### TOILET VACUUM SYSTEMS :

- Permanent Vacuum Toilet System.
- Pressure-Vacuum Toilet System.
- Western and Squatting bowl.

All with pinch valve.

### GWRS (Grey Water Recycling System):

The reuse of the water from the tap for the Toilet flush permits a significant saving in weight and water tanks volume.

- New Patented plug & play and compacted toilet system including GWRS under the bowl.
- New Patented mechanic grey water FILTERING SYSTEM that solve all current market filtering problems.

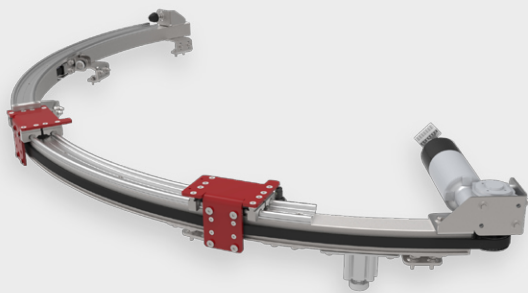
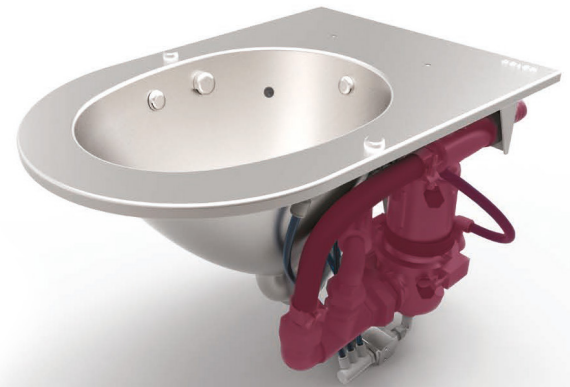
#### Average results

#### FRESH WATER TANK (FWT)

↓ 50% Volume and  
Weight of FWT

#### WASTE WATER TANK (WWT)

↓ 30% Volume and  
Weight of WWT



### AUTOMATIC DOOR:

- Electrical door system with straight or curve guide profile.
- Robust and adaptable to any configuration.



### ELECTRONIC CONTROL UNIT:

- Show the status of all the systems, historic failures, level of water and sewage.
- Control all Toilet electronics.
- Communication with train control system.
- Easy to customize.

### TECHNOLOGIES & SUBSYSTEMS:

- FRP (Fiberglass Reinforced Plastic).
- SLC (Structural Light Composites).
- Sandwich (Honeycomb, Alumium,...).
- Painting.
- Electric Control Panel & Electronics (HW & SW).

- Pneumatic installations.
- Hydraulic installations.
- Doors: STD hinged and sliding & automatic.
- Tanks assemblies: Waste water, Fresh water.
- Lighting.

Our products comply with the railway standards, such as EN 15085, DIN 6701-2, TSI PRM 1300/2014/EU, CEN/TS 16635:2014, EN 50155, EN 50126, EN 50128, EN 50129, EN 61373, EN 45545, REACH/ROHS, or others applicable by country.