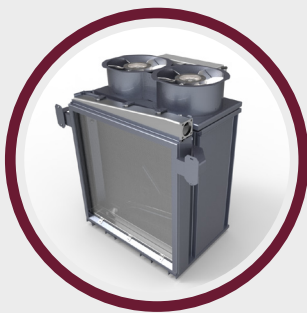
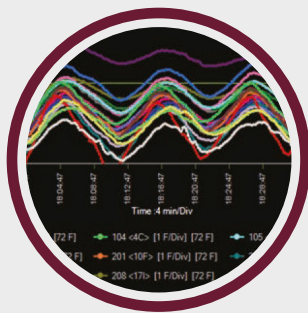


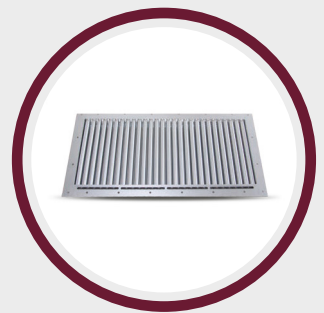
PRODUCTS  
**COOLING SYSTEMS**



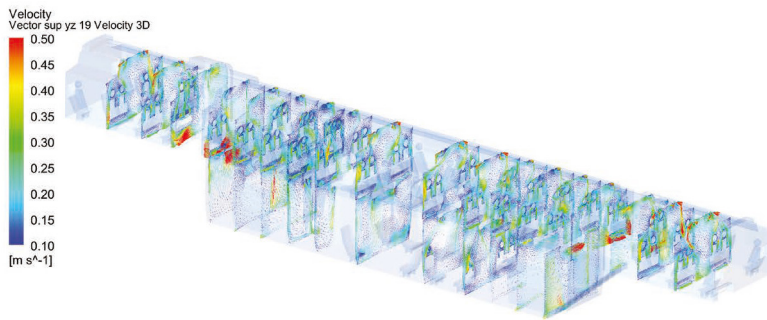
**COOLING  
TOWERS**



**CONTROL & THERMAL  
MANAGEMENT**



**ISF FILTERS  
& HEATERS**



### THERMAL MANAGEMENT:

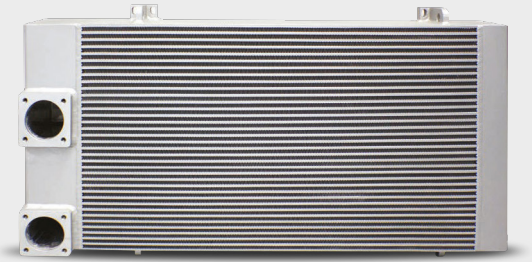
- CDF studies.
- Air optimisation.
- HVAC Control & Ducting.
- ICD – Integrated Ceiling & Ducting.
- Cooling system development.

### COOLING TOWER & RADIATORS:

- Oil cooling tower
- Water cooling tower
- Cooling tower for thermal engines
- Cooling tower for electronic components

### COMPACT RADIATOR

Radiator with 2 or more cooling circuits increasing thermal performance in a compact and reduced volume.



### ISF FILTER:

Low maintenance filter to prevent snow, water and dust inlet to the engines and electronic components.



### HEATER:

Optimized heaters in order to distribute correctly the temperature, which meet the highest standards of different countries.

### TECHNOLOGIES & SUBSYSTEMS:

- Fin design and manufacturing.
- High efficiency washing process.
- Vacuum brazing process.
- EN15085 aluminium and cooper welding.
- Cooper mechanic expanded radiator process.
- Cooper & brass brazed radiator process.
- Radiator and System specific validation tests.

Our products comply with the railway standards, such as EN 15085, DIN 6701-2, EN 45545, EN 50126, EN 50155, EN 50126, EN 50128, EN 50129, REACH/ROHS, or others applicable by country.